

## CROWDER STREET, LONDON, E1

£2,816

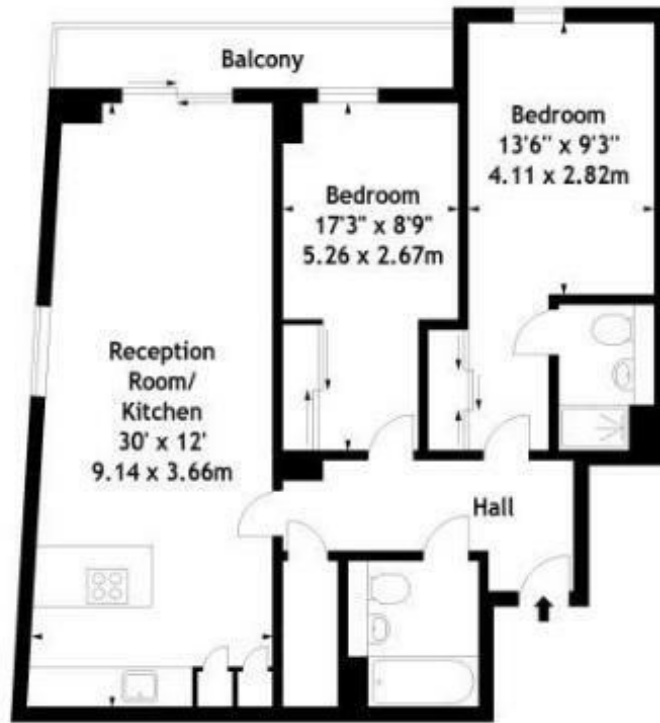
Goldman Greg are delighted to present this bright and spacious two-bed, two-bath apartment within the modern Chi Building, on Crowder Street, E1. Situated on the third floor, enjoy stunning city views from your private balcony.

This fully furnished flat offers a large open plan reception area, integrated kitchen, including a dishwasher, microwave and washer dryer, with gas-supplied underfloor heating throughout. There are two spacious double bedrooms, two modern bathrooms and ample storage.

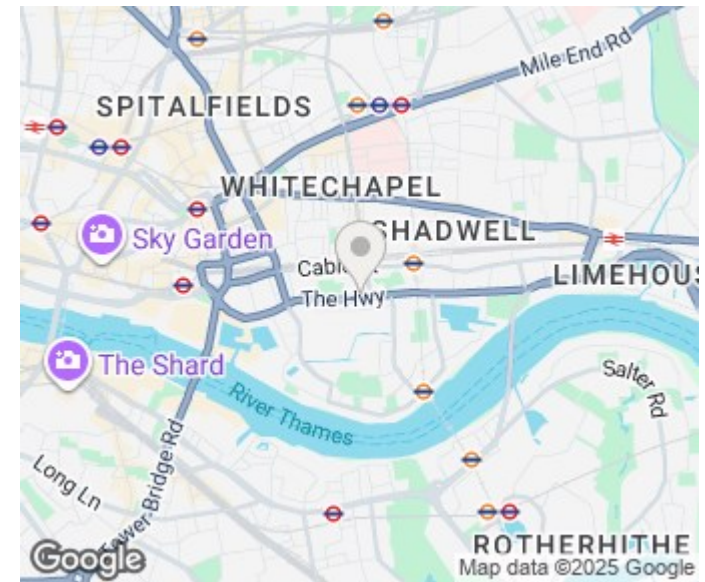
The location boasts easy access to a wealth of amenities and transport links for quick access to the City and London's famous heritage sights such as Tower Bridge and Tobacco Dock. Shadwell, Tower Hill and Tower Gateway stations all moments away.



Chi Building,  
Crowder Street, E1  
Approx. Gross Internal Area  
870 Sq Ft - 80.82 Sq M



Third Floor



Energy Efficiency Rating		
	Current	Potential
Very energy efficient - lower running costs		
(92 plus) A		
(81-91) B	84	84
(69-80) C		
(55-68) D		
(39-54) E		
(21-38) F		
(1-20) G		
Not energy efficient - higher running costs		
England & Wales	EU Directive 2002/91/EC	

Agents Note: Whilst every care has been taken to prepare these particulars, they are for guidance purposes only. All measurements are approximate and are for general guidance purposes only and whilst every care has been taken to ensure their accuracy, they should not be relied upon and potential buyers/tenants are advised to recheck the measurements

Goldman Greg  
143 Leman Street  
London  
E1 8EY

02079770018  
leads@goldmangreg.co.uk  
www.goldmangreg.co.uk

